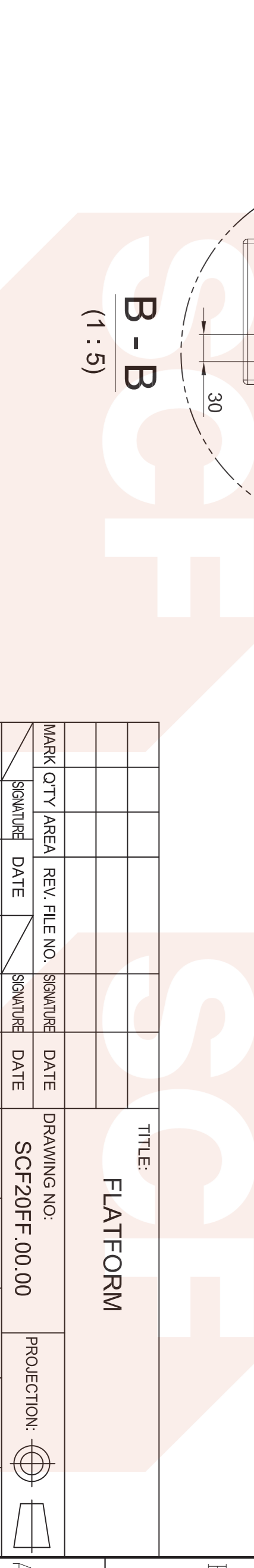
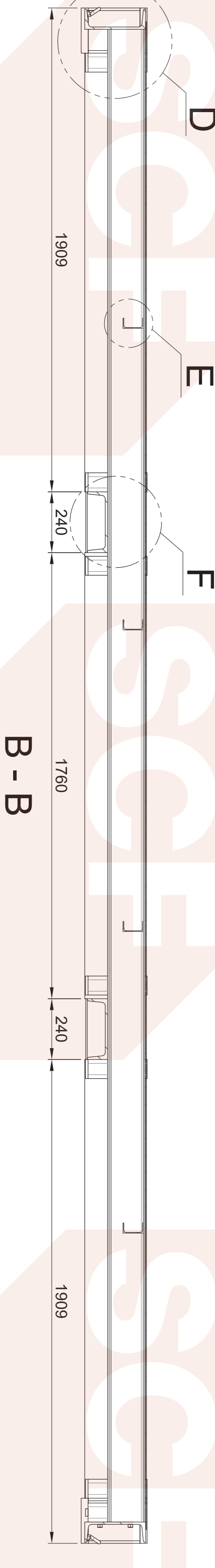
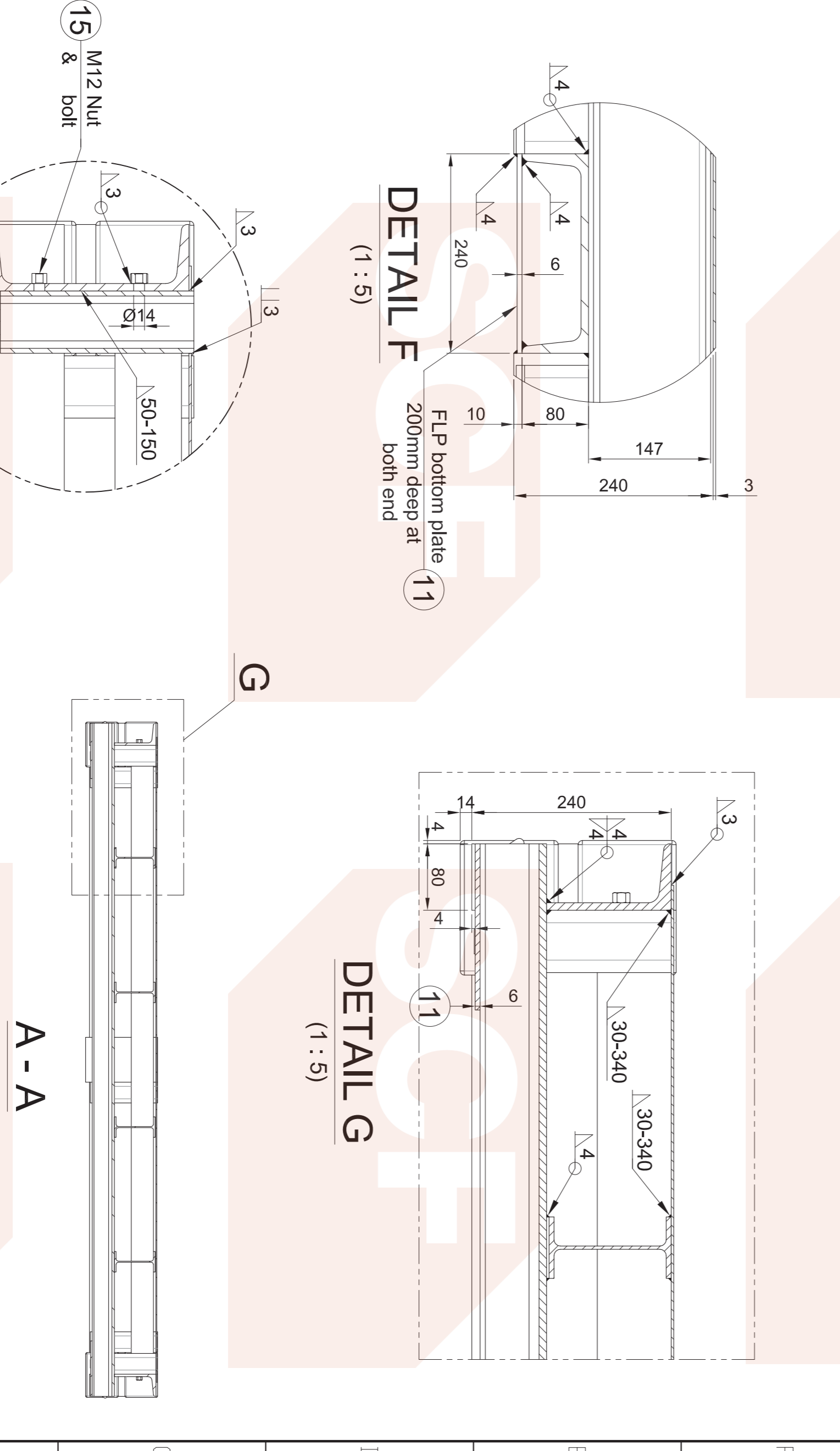
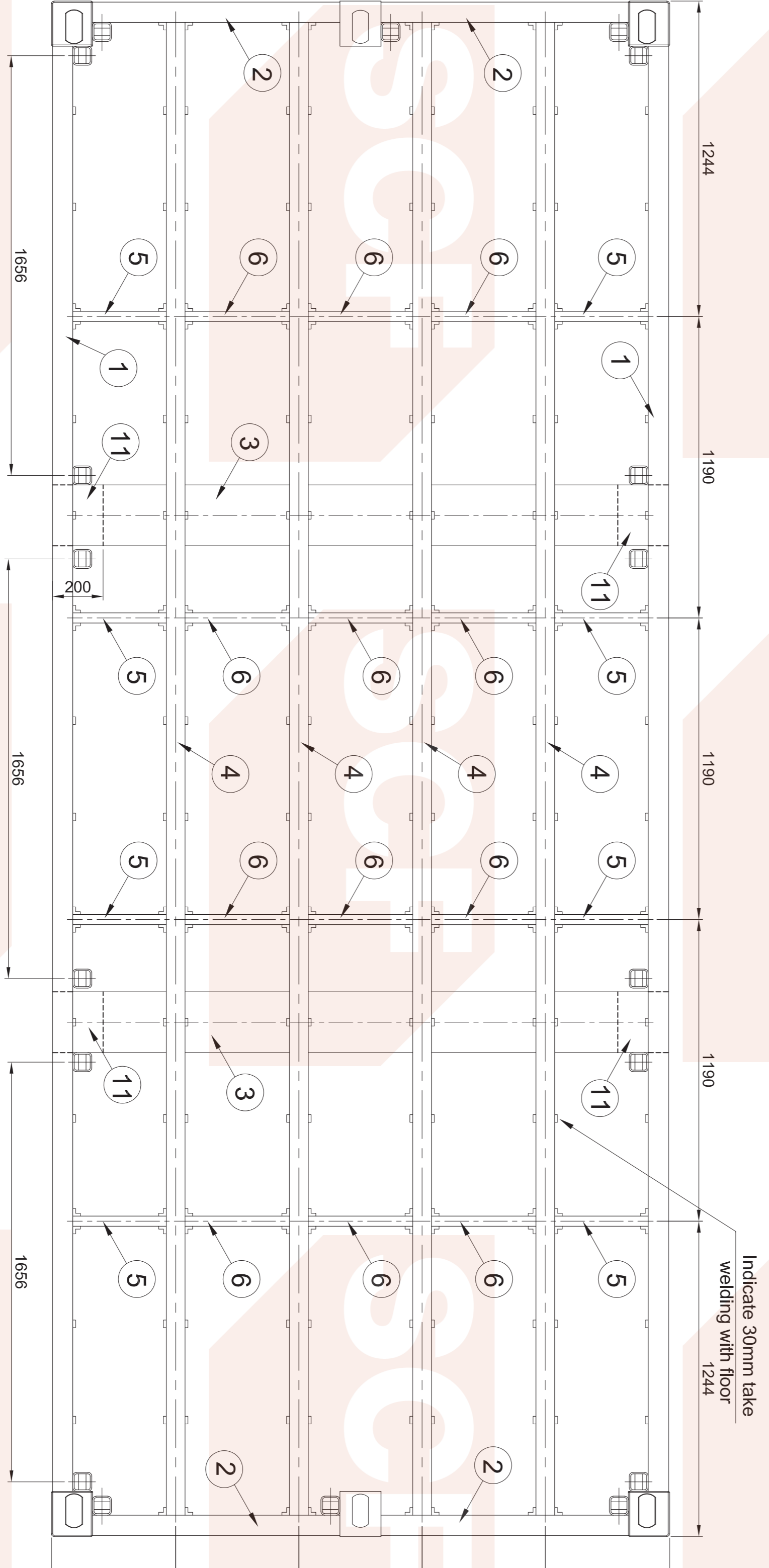
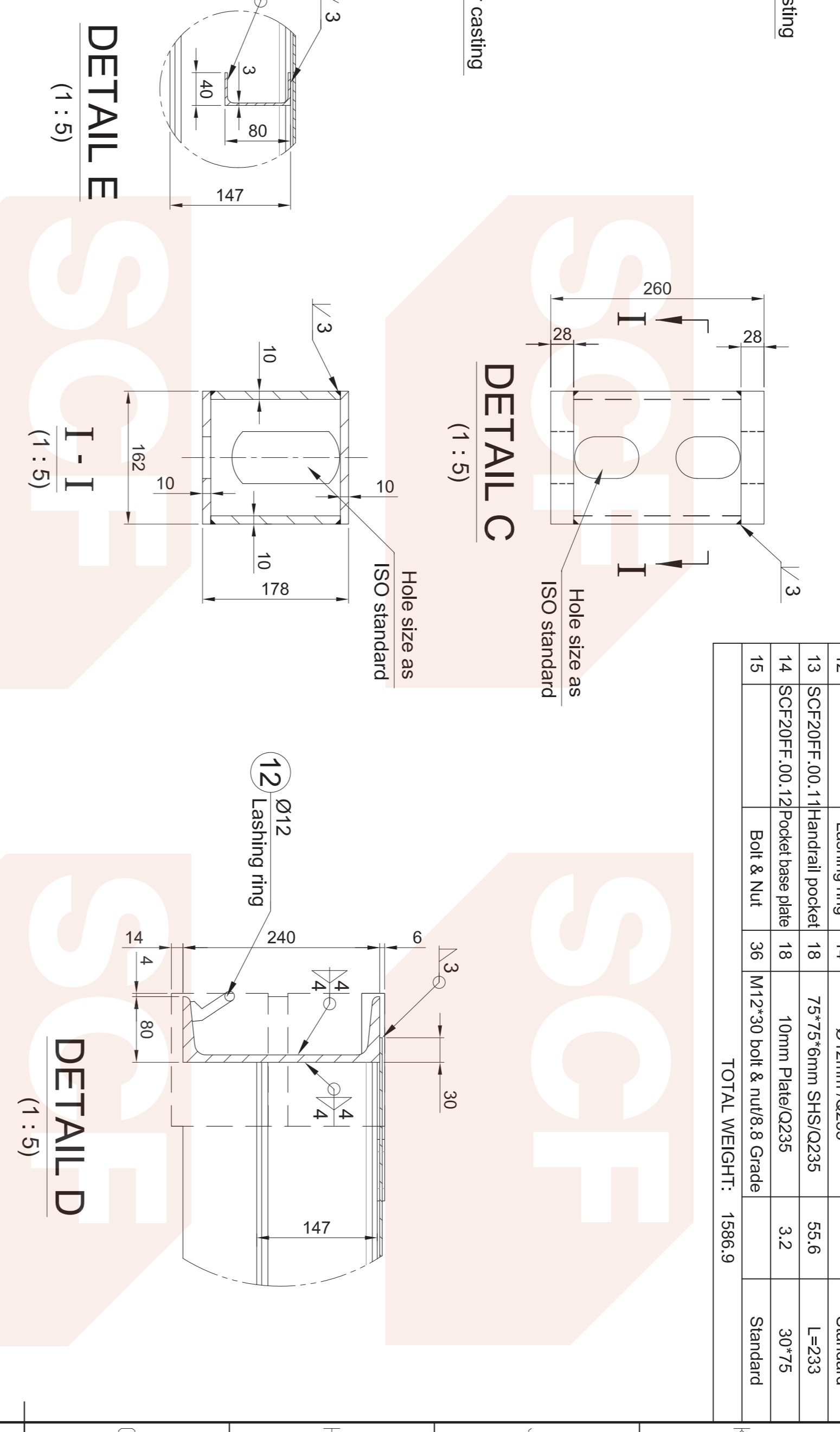
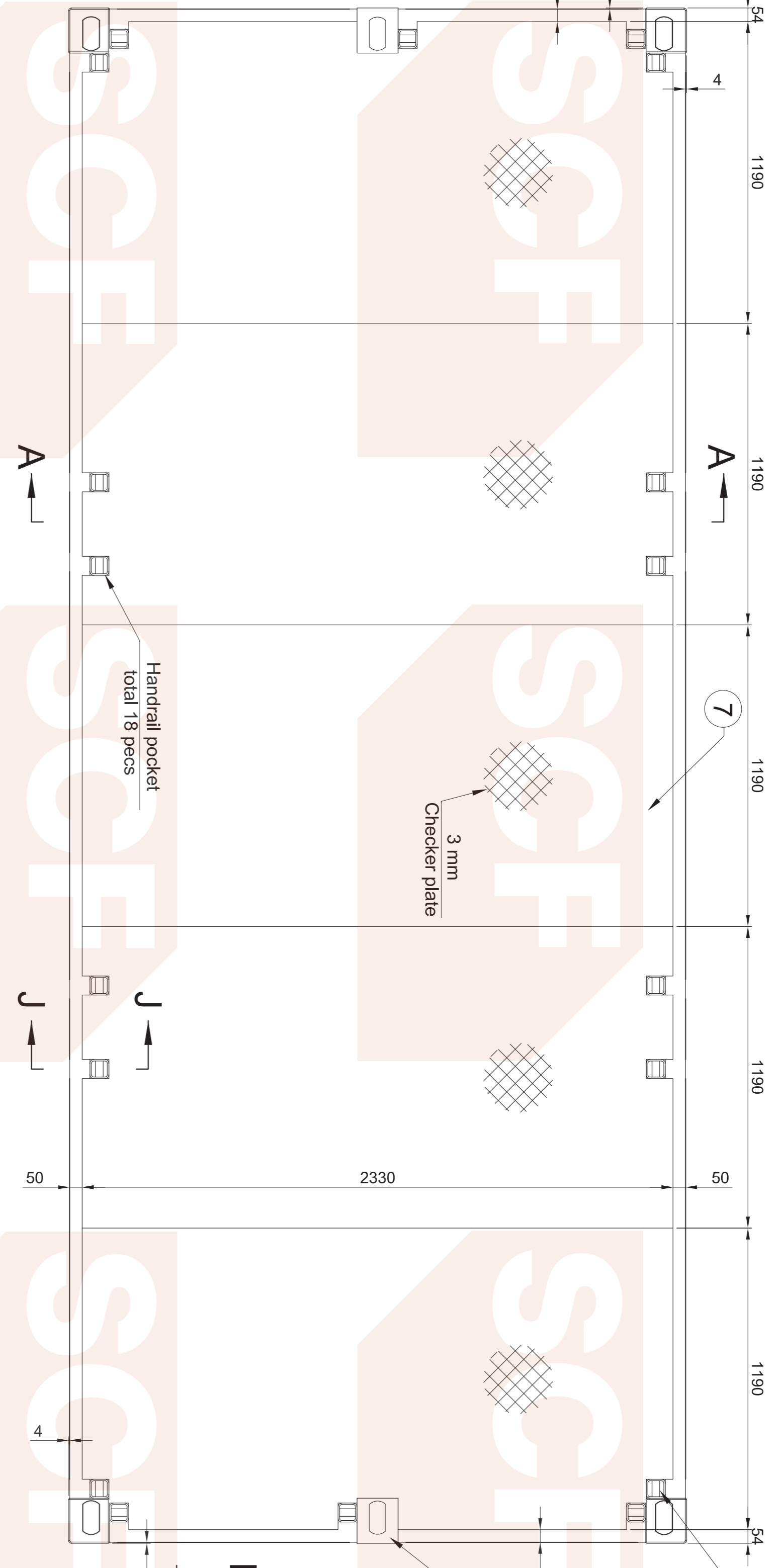


ITEM/DRAWING NO.	DESCRIPTION/QUANTITY	MATERIAL & SIZE	WEIGHT(kg)	LENGTH(mm)
1	SCF20FF.00.01	Slide rail	349.3	L=5702
2	SCF20FF.00.02	End rail	119.6	L=976
3	SCF20FF.00.03	Forklift pocket	148.9	L=2430
4	SCF20FF.00.04	Longitudinal rail	261.5	L=5990
5	SCF20FF.00.05	Floor joist-1	11.3	L=404
6	SCF20FF.00.06	Floor joist-3	20.2	L=482
7	SCF20FF.00.07	Floor	328.5	1190*2330
8	SCF20FF.00.08	Welded corner filling 3mm top & bottom Q235	44.9	178*162*260
9	SCF20FF.00.09	Welded corner filling 4mm Plate/Q235	148.9	174*158
10	SCF20FF.00.10	Corner casting ISO Standard/SCW480	88.0	178*162*118
11	SCF20FF.00.10	FLP bottom plate 6mm Plate/SPA-H	9.0	240*200
12	SCF20FF.00.11	Lashing ring Ø12mm/Q235	Standard	
13	SCF20FF.00.11	Handrail pocket 75*75 6mm SHS/Q235	55.6	L=233
14	SCF20FF.00.12	Handrail base plate 10mm Plate/Q235	3.2	30*75
15	SCF20FF.00.12	M12:30 bolt & nut/8.8 Grade	Standard	
TOTAL WEIGHT:			1588.9	



MARK	QTY	AREA	REV. FILE NO.	SIGNATURE	DATE	DRAWING NO.	PROJECTION:
DESIGNED	ZZX	DATE	17.7.27	TECHNOLOGICAL		SCF20FF.00.00	SCALE
CHECKED		DATE		DATE			EDITION
							A1

TITLE: PLATFORM
 WT (kg) 1115
 SCALE A1
 PROJECTION: 1:15