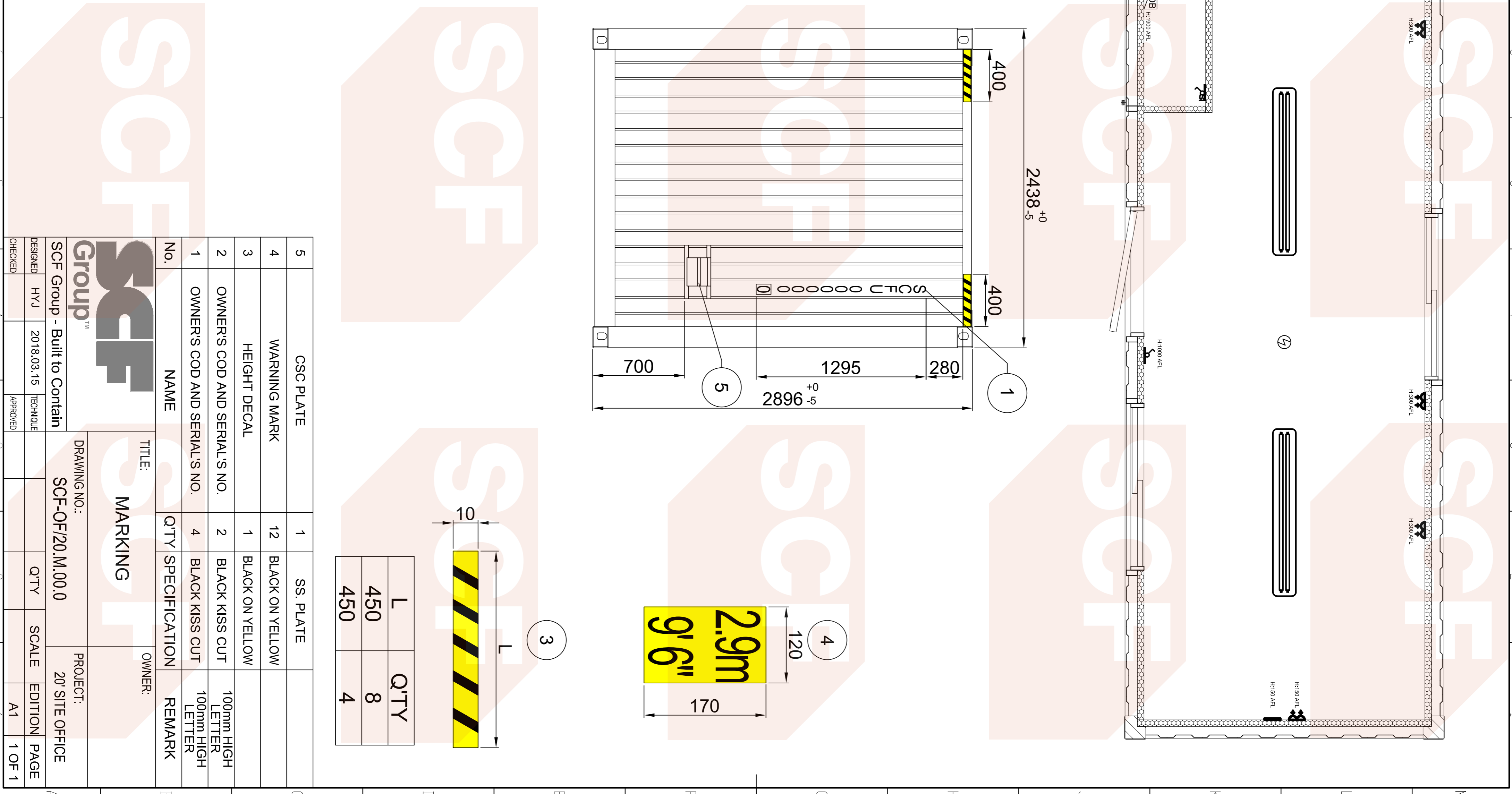


No.	NAME	Q'TY	SPECIFICATION	REMARK
5	CSC PLATE	1	SS. PLATE	
4	WARNING MARK	12	BLACK ON YELLOW	
3	HEIGHT DECAL	1	BLACK ON YELLOW	
2	OWNER'S COD AND SERIAL'S NO.	2	BLACK KISS CUT	100mm HIGH LETTER
1	OWNER'S COD AND SERIAL'S NO.	4	BLACK KISS CUT	100mm HIGH LETTER

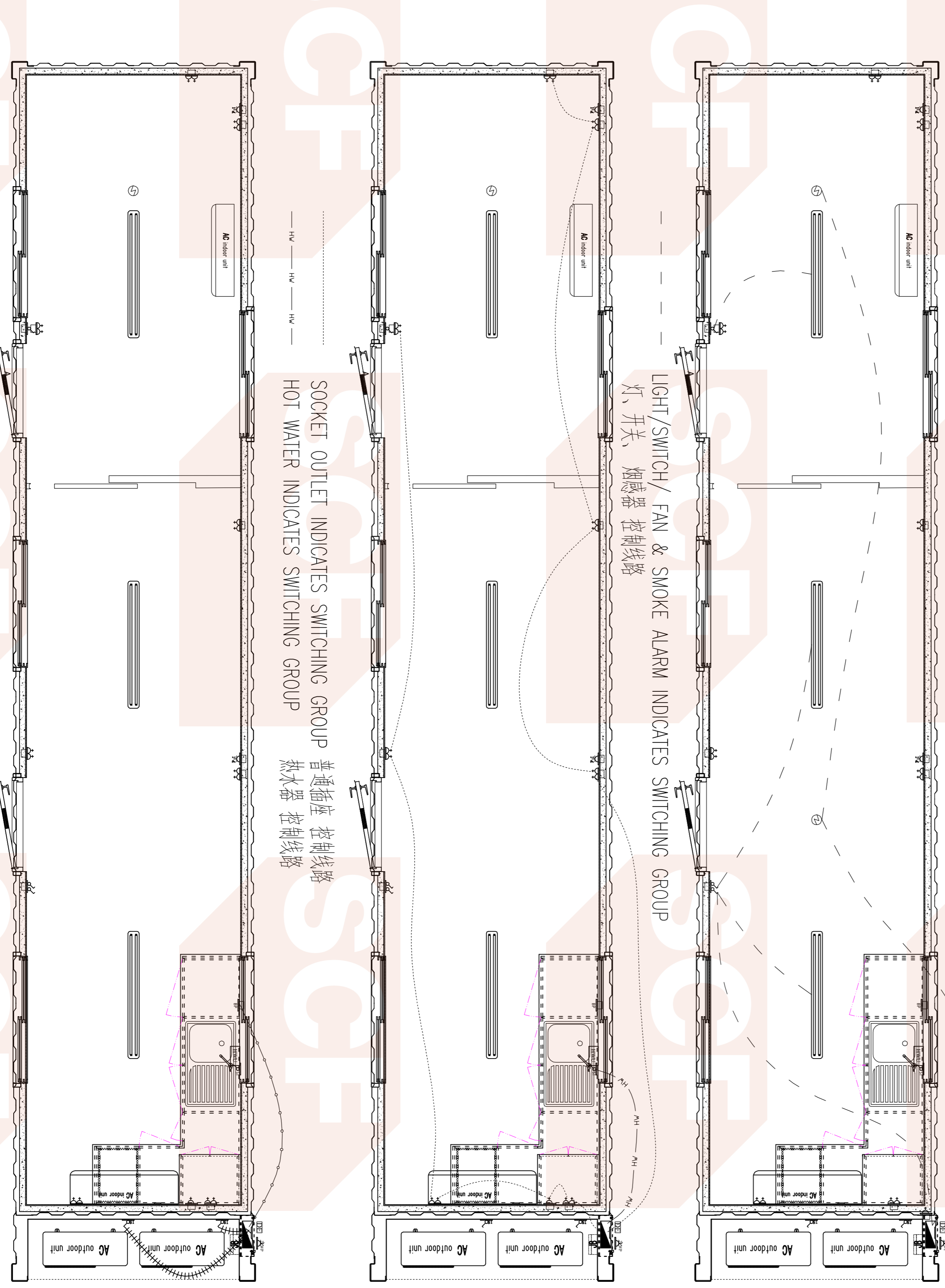
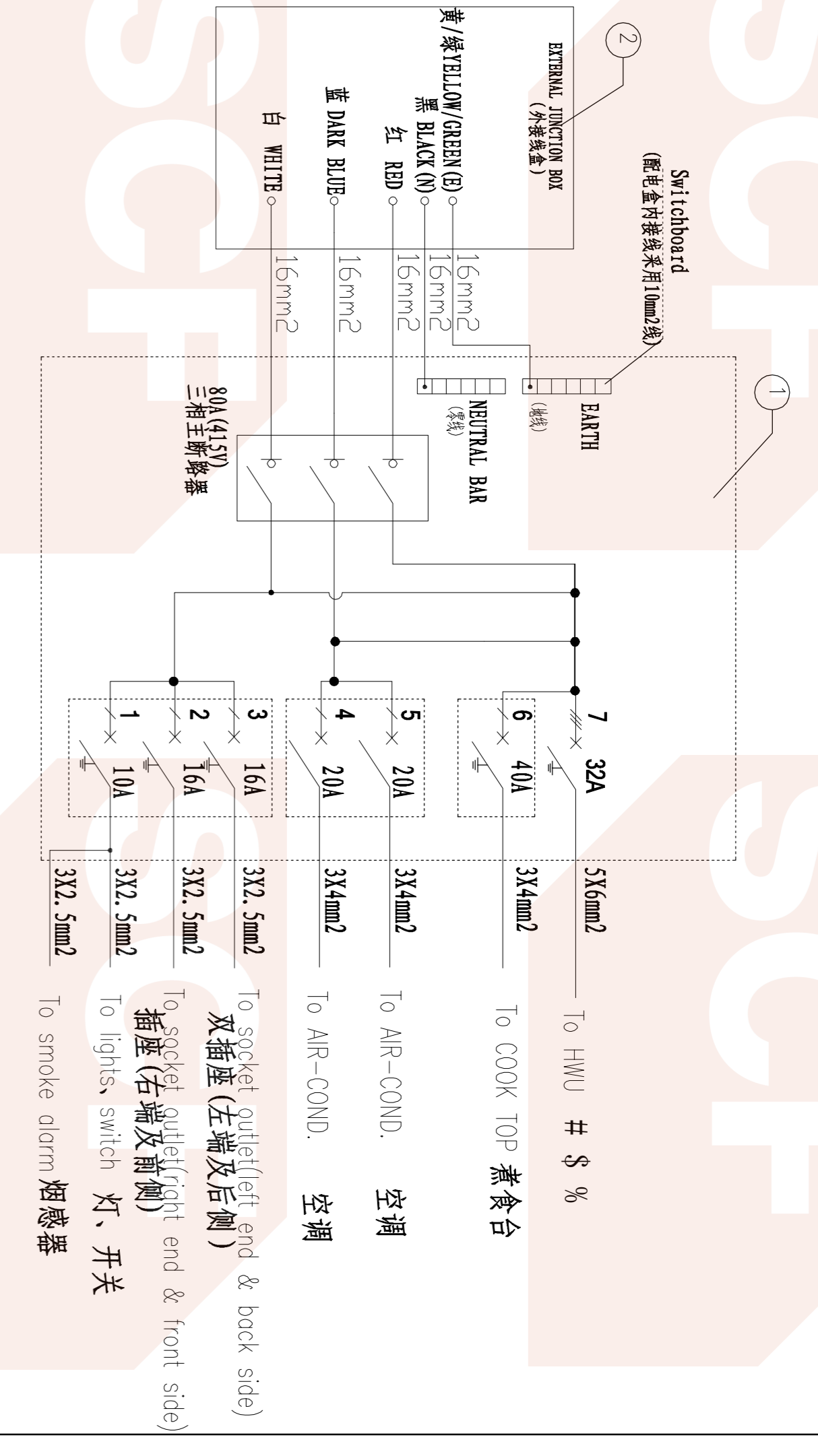
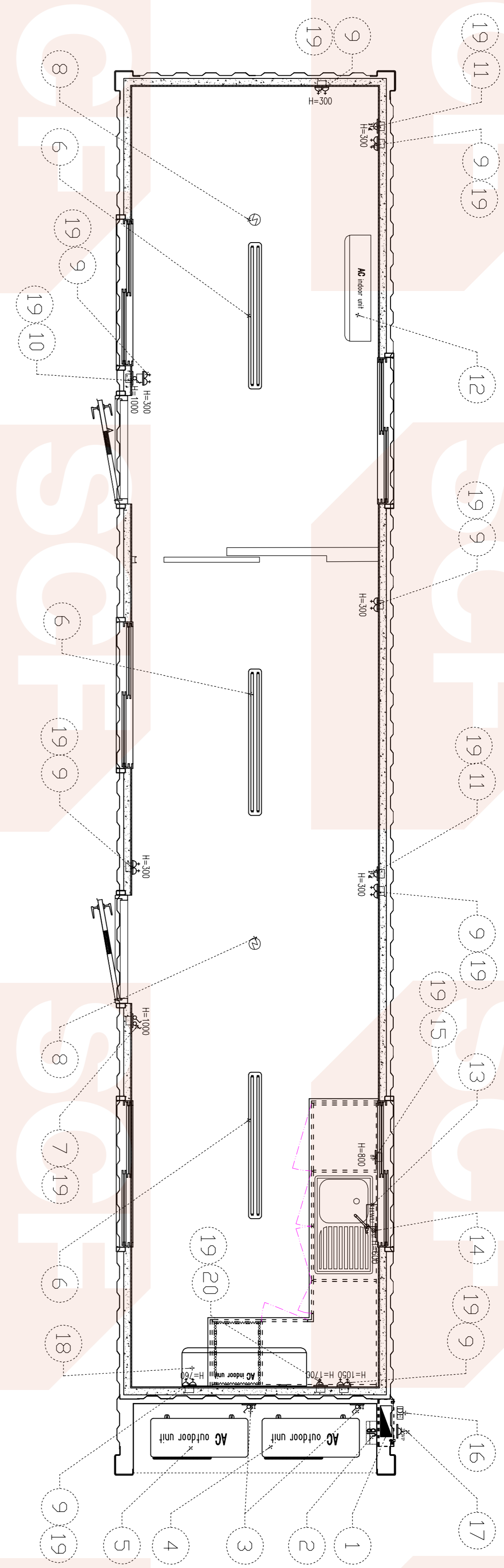
L	Q'TY
450	8
450	4

No.	NAME	Q'TY	SPECIFICATION	REMARK
5	CSC PLATE	1	SS. PLATE	
4	WARNING MARK	12	BLACK ON YELLOW	
3	HEIGHT DECAL	1	BLACK ON YELLOW	
2	OWNER'S COD AND SERIAL'S NO.	2	BLACK KISS CUT	100mm HIGH LETTER
1	OWNER'S COD AND SERIAL'S NO.	4	BLACK KISS CUT	100mm HIGH LETTER

DESIGNED	HVJ	2018.03.15	TECHNICAL	Q'TY	SCALE	EDITION	PAGE
CHECKED			APPROVED			A1	1 OF 1



PROJECT: 20' SITE OFFICE
 DRAWING NO.: SCF-OI/20.M.00.0



20	Single socket 10amp 单插座 10A	1	C2015	Clipsol
19	Shroud STD MTG ACC Black 绝缘罩	15	90B	Clipsol
18	Air-cond. inner unit 空调内机	1		
17	10 A single weatherproof socket 防水单插座	1	WSC227	Clipsol
16	30 pair weatherproof telephone enclosure 网络接线盒	1	3100101D/FL	Clipsol
15	Blank plate 空白面板	1	C2031VX	Clipsol
14	32Amp Isolator switch 热水器用隔离开关	1	565SW332	Clipsol
13	Hot Water 热水器	1	DEL18	
12	Air-cond. inner unit 空调内机	1		
11	Twin R4/5 Cat 5e Outlet 双网插座	2	2032V/RA/5	Clipsol
10	Single Light Switch 10amp 10A 单开关	1	C2031VA	Clipsol
9	Double socket 10amp 双插座 10A	8	C2025	Clipsol
8	Alarm(PHOTOELECTRIC -OPTICAL) 感应器	2	EB146	Brooks
7	Double Light Switch 10amp 10A 双开关	1	C2032VA	Clipsol
6	Fluorescent light 2x36w 双管荧光灯	3	EMPB236AC	Stanlite
5	Air-cond. out unit 空调外机	1		
4	Air-cond. out unit 空调外机	1		
3	Isolator switch 20A 隔离开关	2	565W120	Clipsol
2	External junction box 外部接线盒	1	LUC50866	Clipsol
1	Distribution box (24P) 明装配电箱	1		
	80Amp Main Switch 3 Phase 三相主开关	1	4PSW380	Clipsol
	10Amp Combined RCD/MCB 断路器 10A, 2P	1	4RCBM210/30	Clipsol
	16Amp Combined RCD/MCB 断路器 16A, 2P	2	4RCBM216/30	Clipsol
	20Amp MCB 断路器 20A, 1P	2	4CB120/10	Clipsol
	32AMP Circuit Breakers, Triple Pole 断路器 40A, 2P	1	4CB332/6	Clipsol
	40Amp Combined RCD/MCB 断路器 40A, 2P	1	4RCBM240/30	Clipsol

SCF Group™

GENERAL ASSEMBLY

40' KANGAL ESSENTIAL V2

SCF Group - Built to Contain

DESIGN ZX 2023.27

CHECK HYV 2023.27

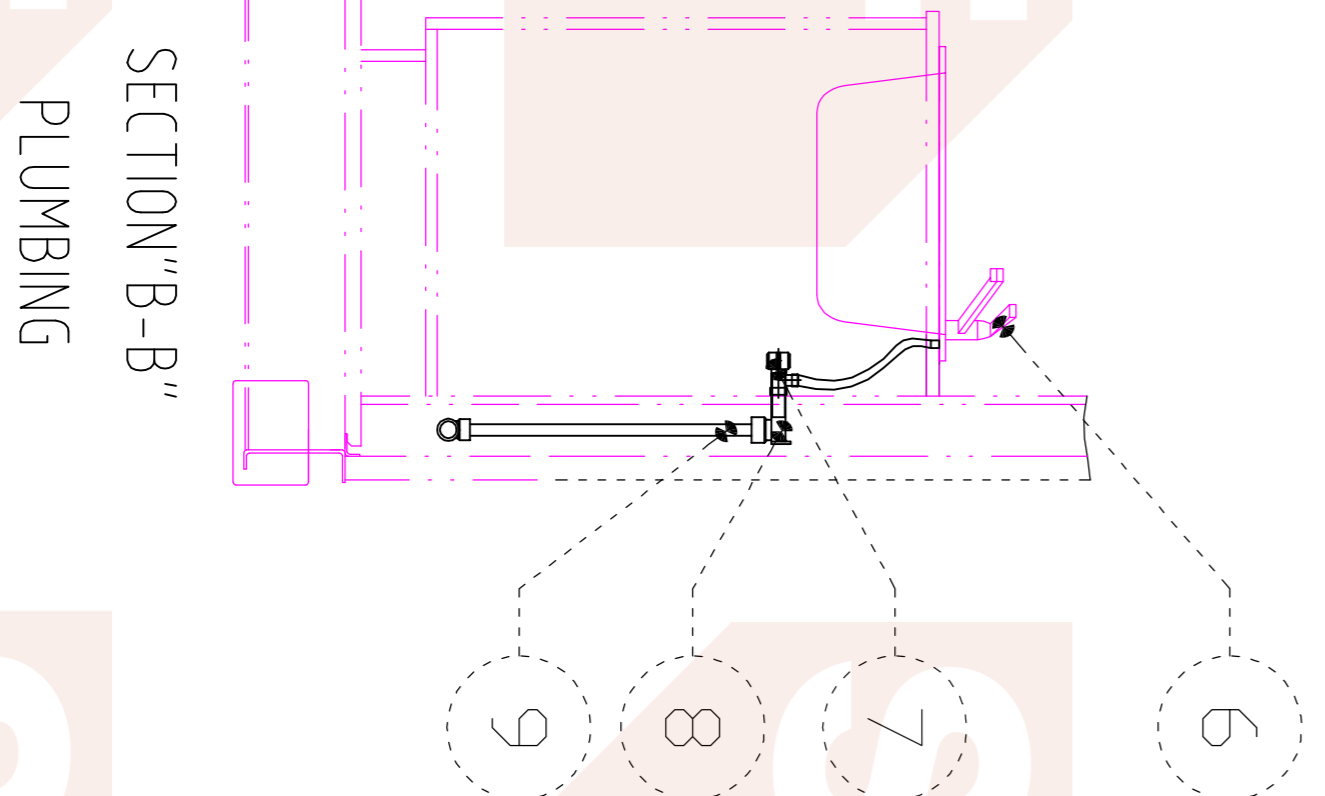
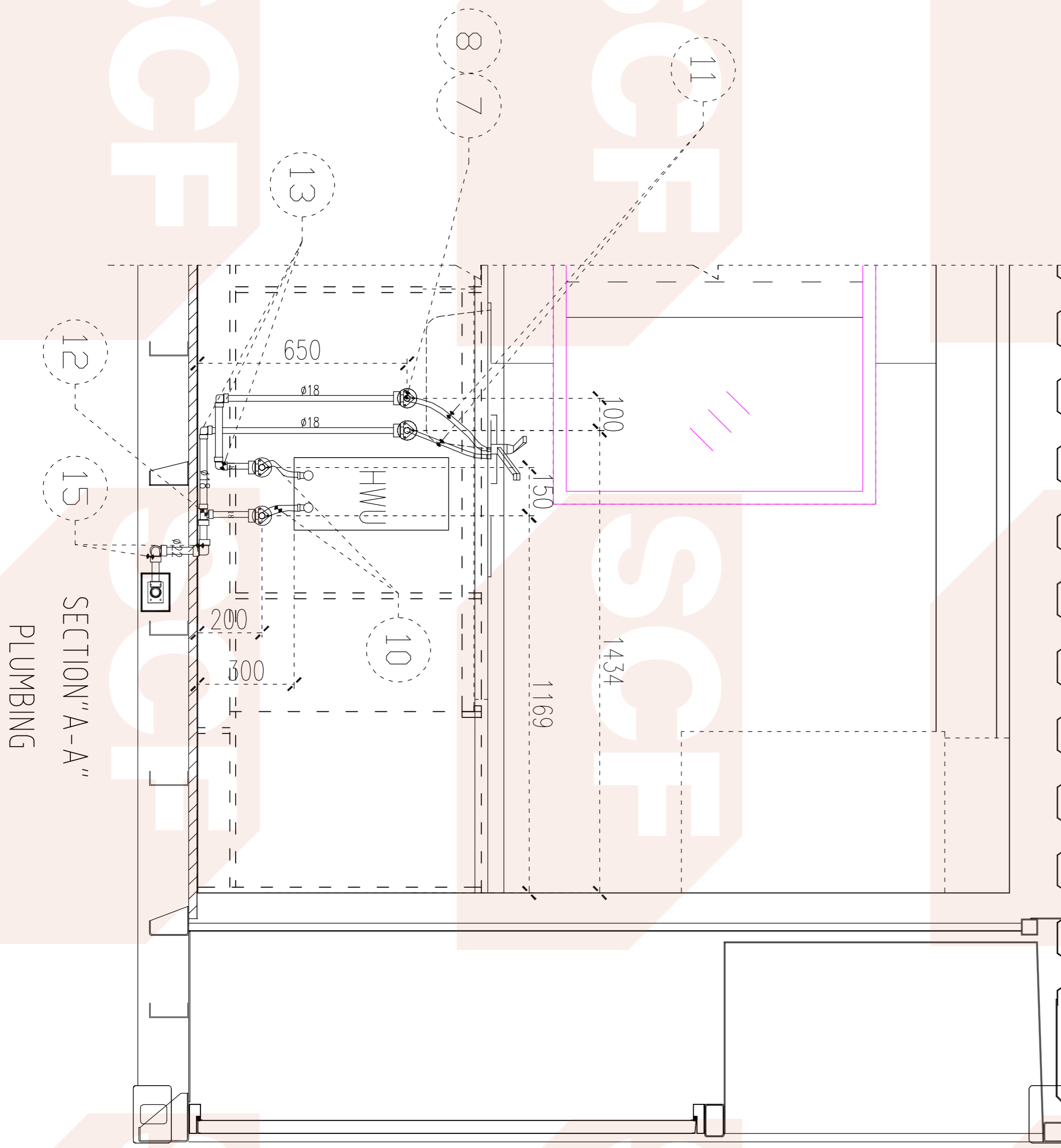
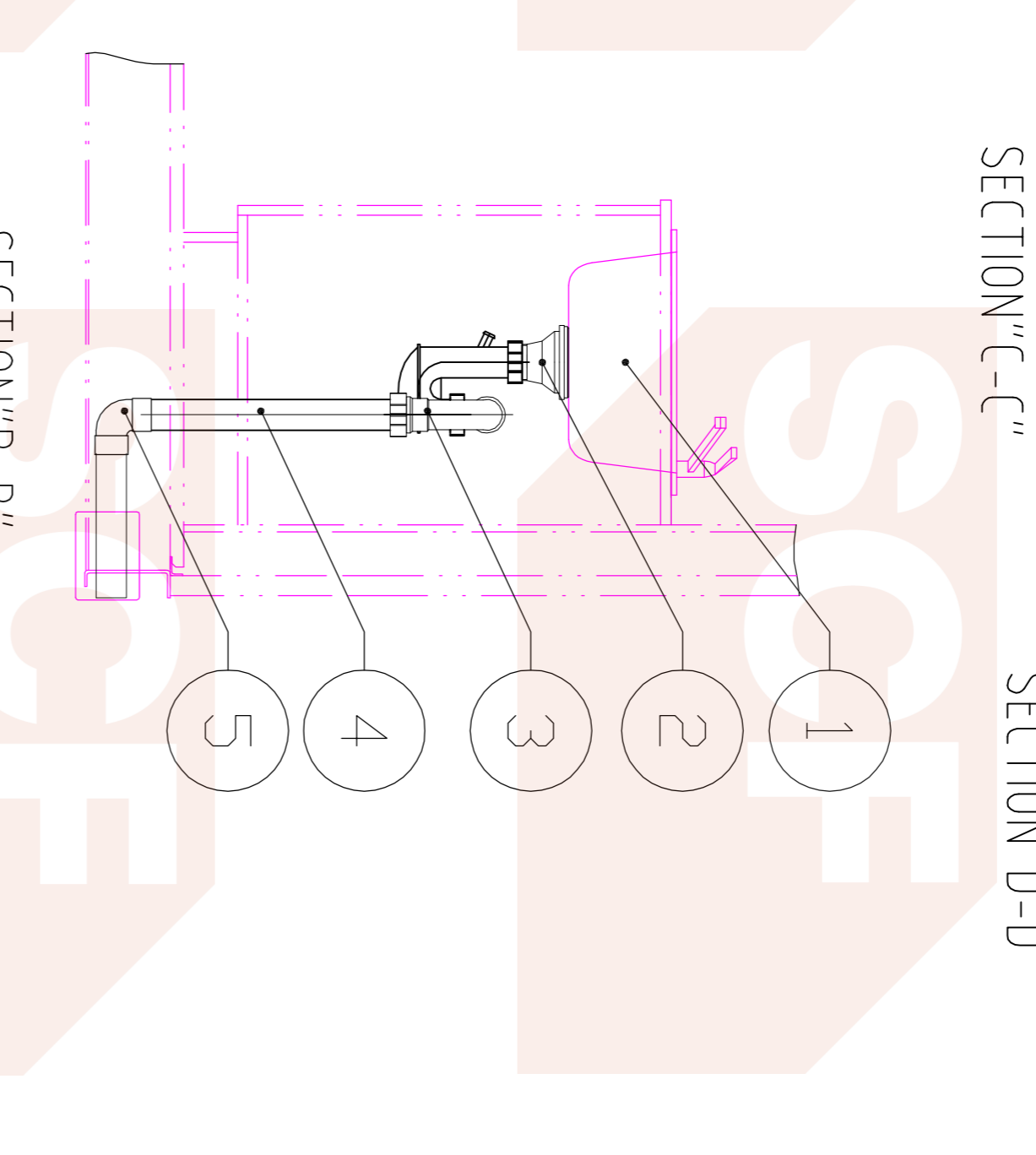
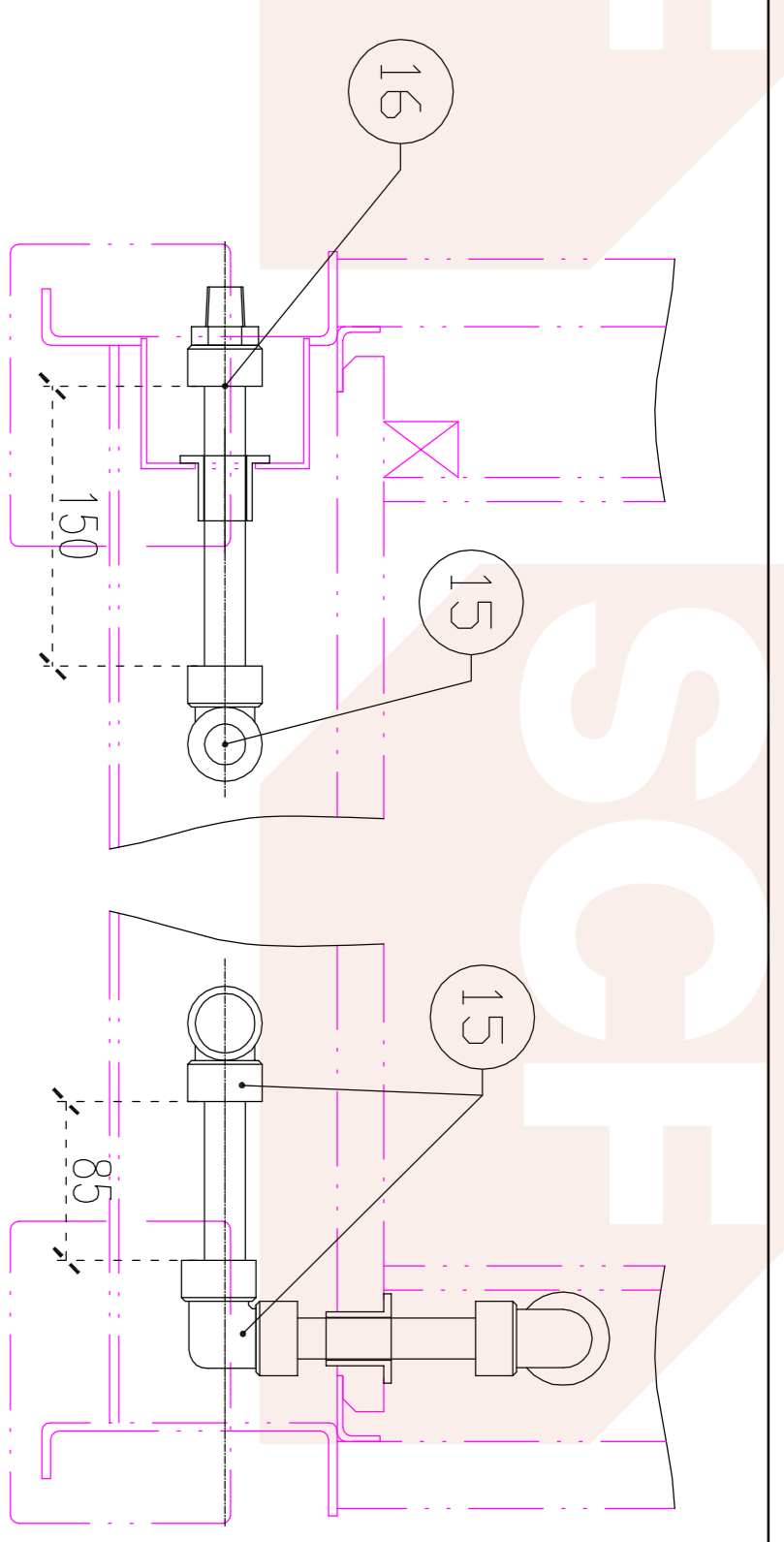
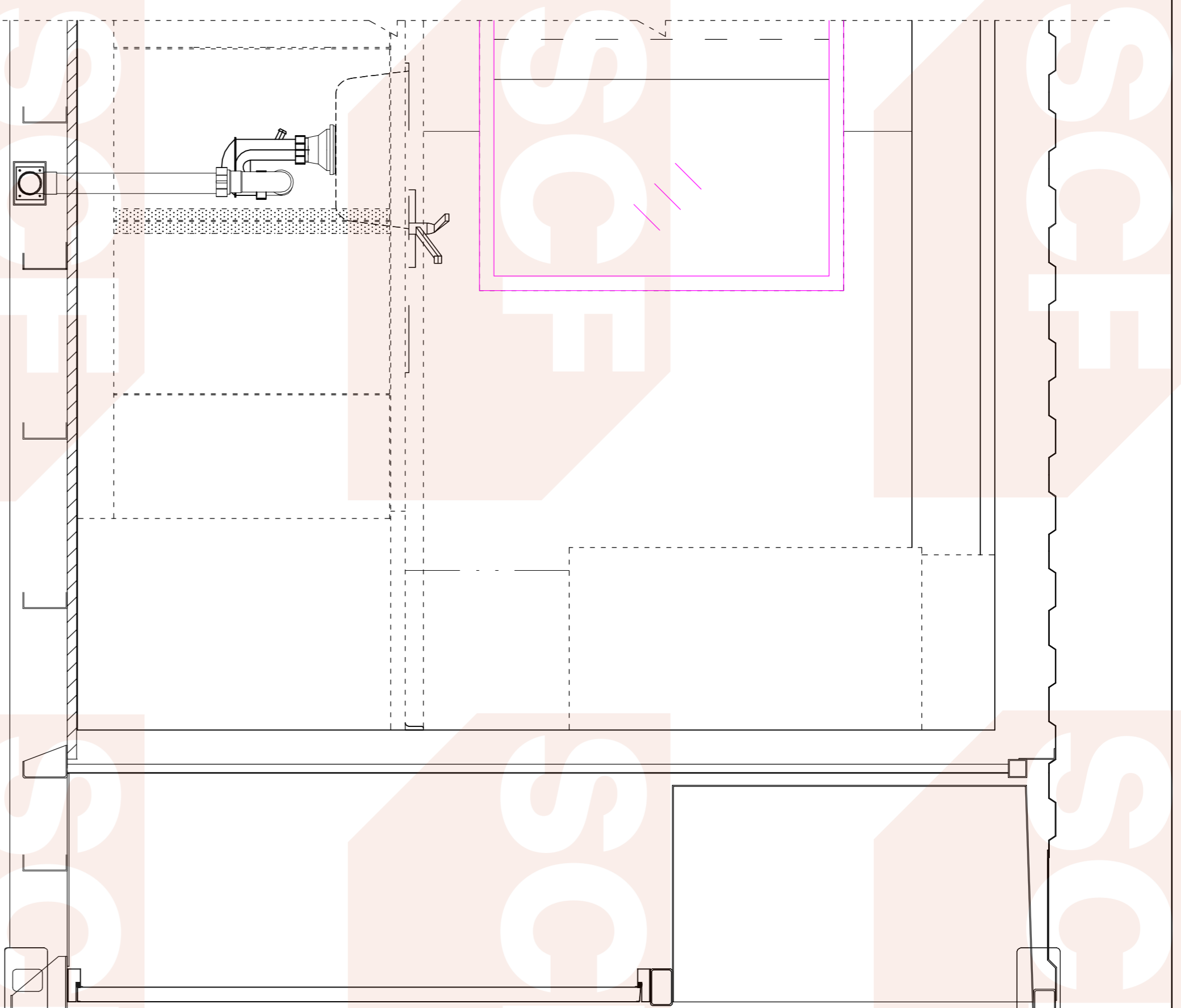
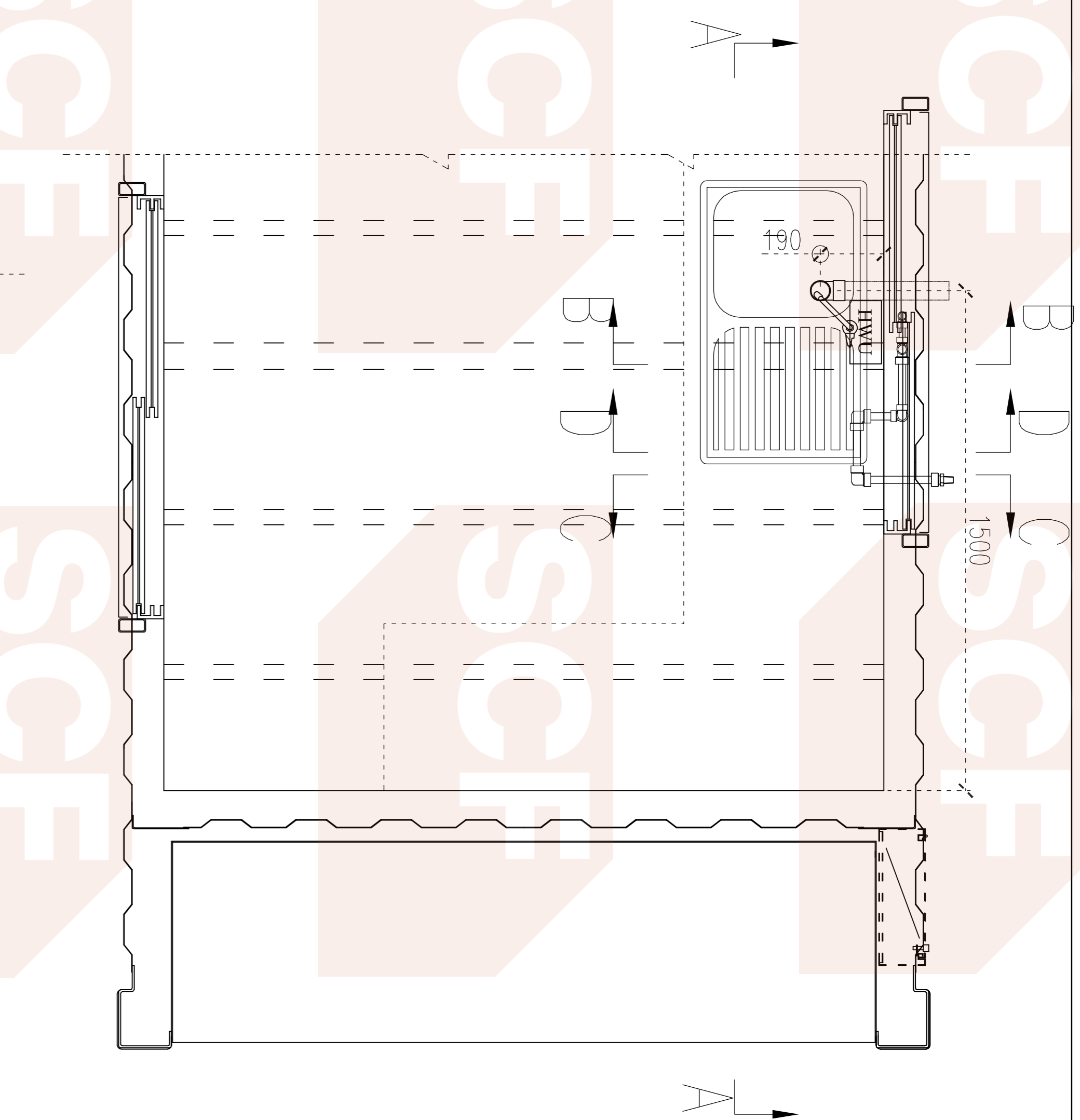
APPROVED

6

130@A1

A1

1 OF 1



16	外牙直接	Male adaptor, threaded	1	22mm*3/4"	Hep2-O
15	90°弯头	90°Elbow	4	22mmX22mm	Hep2-O
14	5 6 ()	Pipe/PB	1米	22mm	Hep2-O
13	90°弯头	90°Elbow	3	18mmX18mm	Hep2-O
12	8 9 ; ;	Branch end reduced tee	1	22mmX18mmX18mm	Hep2-O
11) * + 用连接软管	Metal pipe for kitchen sink	1	L=550mm	为一根
10	热水器用连接软管	Metal pipe for HWU	2	热水器用带	为一根
9	5 6 ()	Pipe/PB	3米	18mm	Hep2-O
8	1 2 3 4 % /	Male wall elbow	4	18mm*1/2"	Hep2-O
7	1 / 2 " T " / 0	1/2 Turn sistem cock	3		
6) * + , \$ - .	Kitchen sink mixer tap	1		
5	Ø50*88° 弯头	Ø50 *88° Bend	1	Ø50*88°	进口
4	50 UPVC & ' (Ø50 UPVC Pipe	1米	Ø50	八达
3	50 SI " # \$ %	Ø50 S Trap	1	Ø50	进口
2	洗碗盆落水	50 mm Cage, plug & washer(for kitchen sink)	1	Ø50	菜茵
1	洗碗盆 (带密封胶圈)	Kitchen sink	1	RH4346	菜茵

序号	名称	数量	规格	备注
----	----	----	----	----

SCF Group
SCF Group - Built to Contain

DRAIN & PLUMBING
给排水布置图

DRAWING NO.: SCF40/KE.00.14.0

OWNER: 40 KARINGAL ESSENTIAL V2

DESIGN	CHECK	DATE	APPROVED	NO.	SCALE	SHEET	TOTAL
ZX	HYJ	2012.3.21		6	1:20@A2	A1	1 OF 1